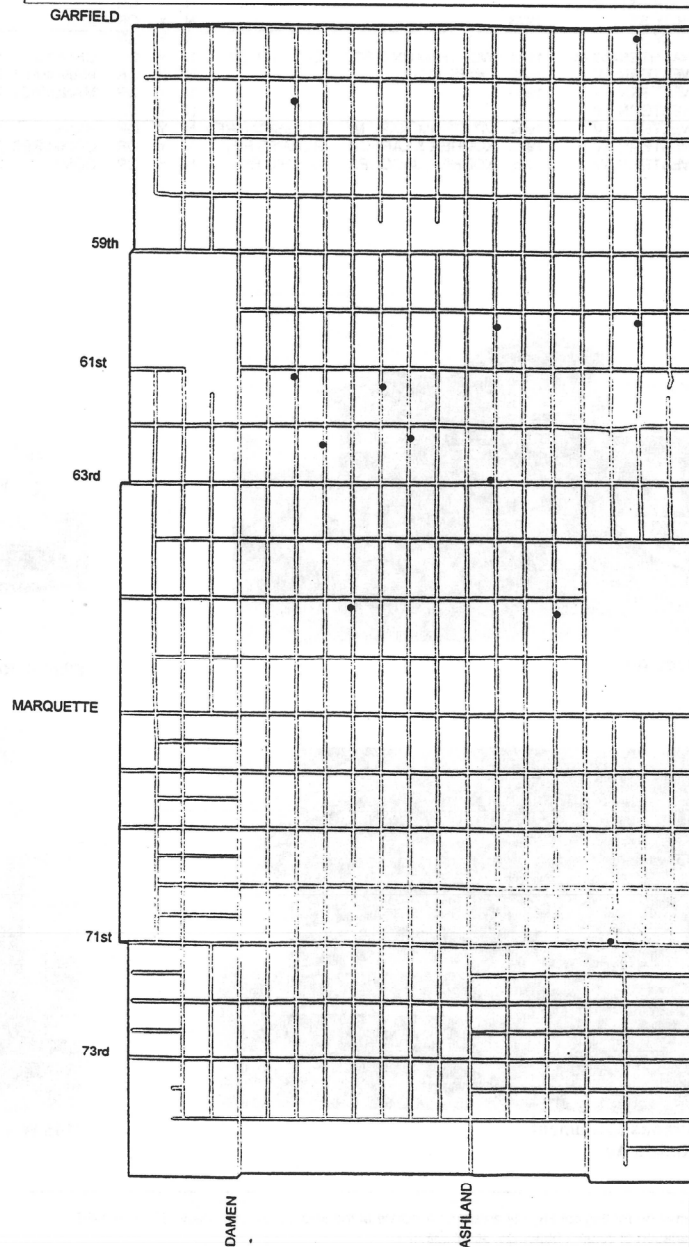


**Community Area #67**  
**West Englewood**

**Population: 52,772**  
**Number of Structures: 10,395**  
**Avg. Date of Construction: 1918**

**Significant Structures: 13**

*Source: 1990 Census, Harris File, CHRS*



(Dots show approximate, rather than specific, locations of significant structures.)  
 Copyright 1996, City of Chicago, Department of Planning and Development

---

## Community Area # 67

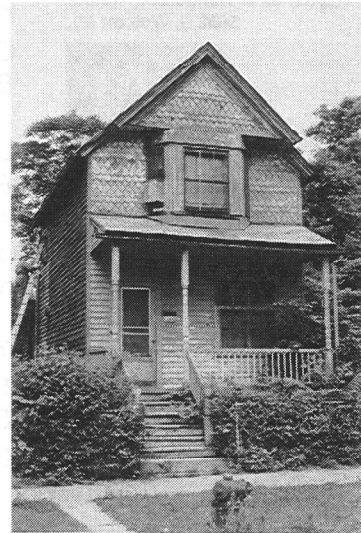
# West Englewood

Swamp and forest originally covered much of West Englewood, which had few settlers when it was incorporated into the Town of Lake in 1865.

Initial settlement took place after the Chicago Fire of 1871 in the area around Ashland Avenue and 63rd Street. J.P. Jensen built a dry goods store (demolished), and the community was called Englewood-on-the-Hill because it lay along a small ridge west of the Englewood railroad station. In 1890, the land west of Halsted Street from 65th to 67th Streets was subdivided. The entire community became part of Chicago when the Town of Lake was annexed in 1889.

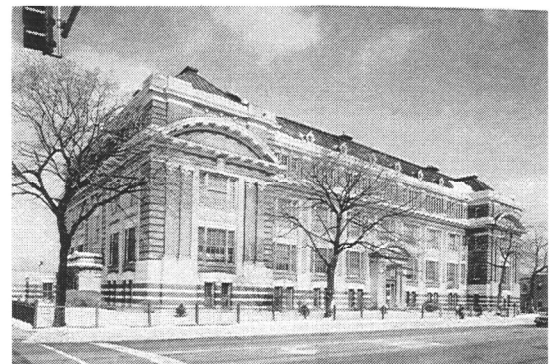
Public transportation to West Englewood was improved in the decade following annexation, accelerating its growth. A Queen Anne-style home at 6226 S. Honore (1893) is representative of the housing built during these years.

By 1901, the community consisted primarily of small cottages and modest apartment buildings. The growing community saw the construction in 1904 of two schools in the Classical Revival style by architect Robert Williamson, the John Peter Altgeld School at 1332 W. 71st Street and the Copernicus School at 6006 S. Throop Street. The same year, the Romanesque Revival-style Eighth United Presbyterian Church was built at 5506 S. Throop Street. In 1907, West Englewood saw a new spurt of residential growth when the Englewood (now CTA Green) elevated line was extended west to Loomis Avenue. The elevated station at 6314 S. Racine dates from this time, as does the Prairie-



6226 S. Honore St.

John P. Altgeld School  
1332 W. 71st St.



---

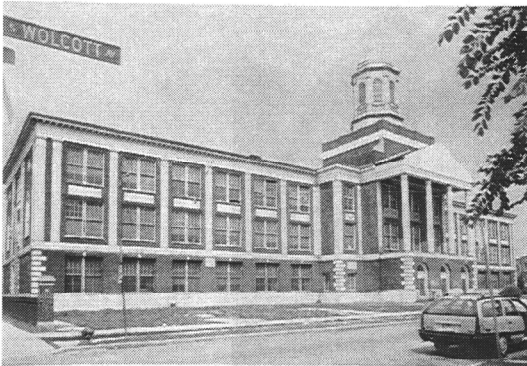
style Harper High School at 6500 S. Wood Street.

Development during the 1910s continued along similar lines, with small single-family houses and flat buildings filling neighborhood streets. The Ashland streetcar line was extended south from 69th to 74th by 1913, while streetcars on Damen began running to 63rd in 1917. Arthur Hussander designed the Lindblom Technical School at 6100 S. Wolcott Avenue in 1917 for the growing community.



Robert Lindbloom Technical High School  
6100 S. Wolcott Av.

The 1920s saw the erection of new homes and bungalows along Garfield Boulevard and Marquette Road as the population increased due to the growth of nearby industries. The Charles Henderson School was completed in 1922 at 5632 S. Wolcott Avenue after Colonial Revival designs by John Christensen, and Karl Vitzhum completed the Classical Revival-style Ashland-Sixty third State Bank at 1534 W. 63rd Street in 1924.



Charles R. Henderson School  
5632 S. Wolcott Av.

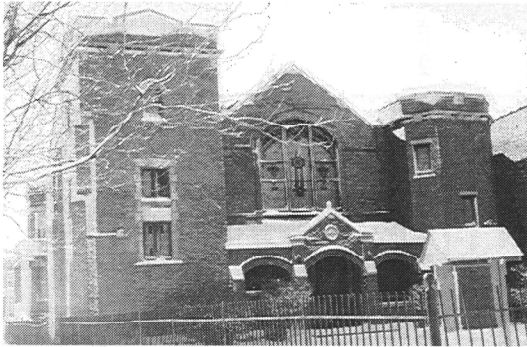
Little new construction took place in West Englewood after the start of the Depression. Still linked to Englewood to the east, West Englewood is beginning to use its stock of historic buildings to revitalize the community.

*The focus of the Chicago Historic Resources Survey was on buildings erected prior to 1940. Buildings and developments erected after that date generally are not included in the inventory.*

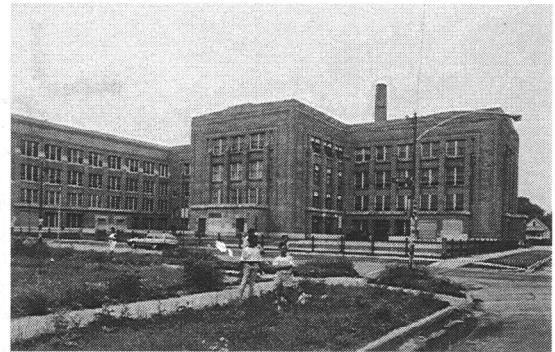
# Community Area #67

## West Englewood

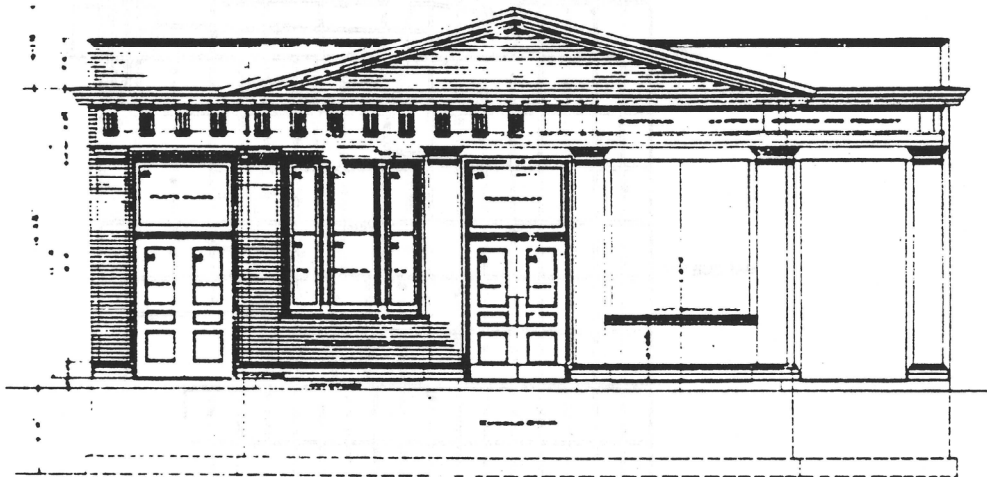
Address	Date	Architect	Building Style	Survey LM	IS	Building Code Type	PIN	Form #
1534 W 63 ST	1924	VITZTHUM, KARL M.	CLASSICAL REV	N	Y	OR BANK	2017325038	671611002
1332 W 71 ST	1904	WILLIAMSON, ROBE	CLASSICAL REV	N	Y	OR SCHOOL	2020328025	671603001
6517 S BISHOP ST				N	Y	GN	2020115009	671607002
6125 S HERMITAGE AV				N	Y	GN	2018421001	671514003
6226 S HONORE ST	1893		QUEEN ANNE	N	N	OR SFR	2018426048	671514001
6017 S JUSTINE ST	1920s			N	N	OR MONUMEN	2018209011	671611003
6211 S PAULINA ST				N	Y	GN	2018430003	671514004
6314 S RACINE AV	1900s		CLASSICAL REV	N	N	OR EL STA	2020500008	671607001
5506 S THROOP ST	1904		ROMANESQUE	N	N	OR CHURCH	2017105008	671614001
6006 S THROOP ST	1904	WILLIAMSON, ROBE	CLASSICAL REV	N	Y	OR SCHOOL	2017313012	671611001
5632 S WOLCOTT AV	1922	CHRISTENSEN, JOH	COLONIAL REV	N	Y	OR SCHOOL	2017309001	671517001
6100 S WOLCOTT AV	1917	HUSSANDER, ARTH		N	Y	OR SCHOOL	2018417002	671514002
6500 S WOOD ST	1900s		PRAIRIE	N	Y	OR SCHOOL	2019219001	671509001



**Eighth United Presbyterian Church**  
5506 S. Throop St.



**William R. Harper High School**  
6500 S. Wood St.



**Racine Avenue elevated station, CTA Green line**  
6314 S. Racine Av.