

Community Area #63

## Gage Park

**Population: 26,957**

**Number of Structures: 6,696**

**Avg. Date of Construction: 1927**

**Significant Structures: 24**

*Source: 1990 Census; Harris File, CHRS*



---

## Community Area # 63

# Gage Park

The community area of Gage Park historically was part of the vast, flat prairie covering the southwest side of modern-day Chicago. The first attempt at real estate development came in 1873, when Henry Gage bought land for a park and residential subdivision in the eastern portion of the community, near 55th and Western. However, his heirs lost control of the land in 1877, and the new owner, eccentric millionaire Hetty Green, kept the land undeveloped during her lifetime.

The first lasting development occurred farther west at Elsdon, a tiny railroad settlement at 51st Street and Kedzie Avenue that grew up along the Grand Trunk railroad, which ran north-south at Central Park Avenue. The community was sparsely populated when the community area was annexed to Chicago in 1889, containing only 30 homes, no paved streets and no public transportation. Remnants of this early period include a frame cottage at 5126 S. Homan and flat buildings at 5237 and 5239 S. Trumbull.

Development during the 1890s remained spotty, although public transportation improvements made the area more accessible by 1900. Street cars began running on Kedzie, south to 63rd, in 1896, then on Western, south to 71st, in 1899. Single family homes at 3401 W. 53rd Place and 3541 W. 58th Street remain from this decade.

The community's greatest growth occurred between 1905 and 1919. Gage Park itself, located at the intersection between Western and Garfield boulevards, was laid out in 1905 by the South Park



5126 S. Homan Av.

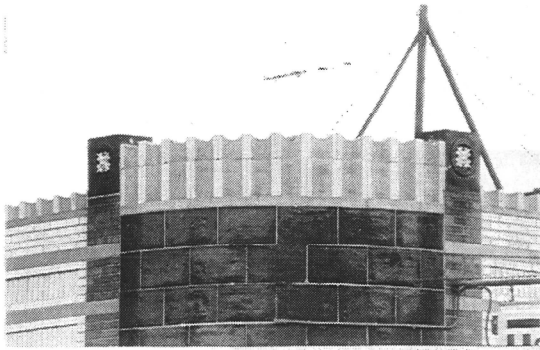


3541 W. 58th St.

---

Commissioners. After her death, Hetty Green's heirs subdivided her land holdings at 55th and Western, and hundreds of brick bungalows and two-flats soon filled these newly platted streets. Industrial development occurred near area railroads, including the Kenwood industrial district, a portion of which is located in the northwestern corner of the community area.

The community continued its rapid growth in the 1920s, sharing in the general prosperity enjoyed by Chicago. Several new subdivisions developed, mostly composed of simple brick bungalows and two-flats. Glendale, between 51st and 53rd streets, ran from Homan Avenue west to the belt line railroad on the community area's western edge. Garfield Manor, between 53rd and 55th streets, stretched from Homan to Kedzie avenues, while Burr Ellyn grew up south of 55th Street, extending south into the Chicago Lawn community area. Only a small area east of Kedzie was actually called Gage Park at the time. Most residents worked in the Union Stockyards, located in the New City community area to the northeast, the Grand Trunk railroad, or the Crane Company in the neighboring Brighton Park community area.



3324 W. 55th St.

Colony Theater  
5842 S. Kedzie Av.



Gage Park's commercial strips developed during the 1920s, especially those along Kedzie, 51st and 59th. Gage Park's example of a flamboyant movie palace is the Colony, a Classical Revival-style theater at 5842 S. Kedzie (1925). Interesting homes from the era include 5554 S. Sawyer (1926) and 5501 S. Richmond (c. 1935).

Construction trailed off dramatically during the Depression, although J.G. Steinbach did complete the Art Deco-style commercial building at 3324 W. 55th in 1938. The postwar housing shortage spurred some new growth in the 1950s, as industry continued to have a strong presence along the railroad lines and north of 51st Street. Gage Park has maintained a stable community character with remnants from each period of its history.

*The focus of the Chicago Historic Resources Survey was on buildings erected prior to 1940. Buildings and developments erected after that date generally are not included in the inventory.*

# Community Area #63

## Gage Park

Address	Date	Architect	Building Style	Survey		Building Code Type	PIN	Form #
				LM	IS			
2734 W 52 ST				N	Y	GN	1912400020	631411003
3401 W 53 PL	1890s			N	N	OR	1911414022	631331002
2414 W 53 ST	1932	BEDNARIK, JOSEPH		N	Y	OR	1912415041	631411002
2432 W 54 ST	1914	MANSE, W.		N	N	OR	1912422056	631411001
3032 W 54 ST				N	Y	GN	1912323030	631412002
3038 W 54 ST				N	Y	GN	1912323028	631412003
2405 W 55 ST	1920s	SOUTH PARK COMM		N	Y	OR	2008320001	631406002
3324 W 55 ST	1938	STEINBACH, J.G.	ART DECO	N	Y	OR	1914204047	631331001
3541 W 58 ST	1890s			N	N	OR	1914222006	631328001
5151 S ALBANY AV	1912		CRAFTSMAN	N	N	OR	1720306021	631412001
5020 S ARTESIAN AV	1926	CHRISTENSEN, JOH		N	Y	OR	1912223015	631416001
5514 S CHRISTIANA AV	1912			N	N	OR	1914203021	631328003
5126 S HOMAN AV	1880s		WORKMAN COT	N	N	OR	1911402033	631201001
4916 S KEDZIE AV	1914			N	Y	OR	1911202007	631205001
5842 S KEDZIE AV	1925	LOEWENBERG, M.L.	CLASSICAL REV	N	Y	OR	1302415047	631328004
5632 S MAPLEWOOD AV	1910s	GRIFFIN, WALTER B		N	N	OR	1913208032	631406003
5501 S RICHMOND ST	1930s	LUTHER & CHRISTE	ART DECO	N	Y	OR	1913105001	631407001
5513 S ROCKWELL ST				N	Y	GN		631406004
5842 S ROCKWELL ST	1923	SAMMONS, W.E.		N	N	OR	1912323026	631406001
5250 S SAWYER AV				N	Y	GN	1911411014	631201004
5554 S SAWYER AV	1926	BRAUCHER, ERNES		N	N	OR	1914205038	631328002
5237 S TRUMBULL AV	1880s			N	N	OR	1911408015	631201002
5239 S TRUMBULL AV	1880s			N	N	OR	1911408016	631201003
4919 S WESTERN BV	1920s	KALLAL, CHARLES	CLASSICAL REV	N	Y	OR	2007112002	631415001



5554 S. Sawyer Av.



Dr. Walter S. Christopher School  
5020 S. Artesian Av.

5514 S. Christiana Av.



SS. Peter and Paul Orthodox Church  
2414 W. 53rd St.

