

Community Area #53

West Pullman

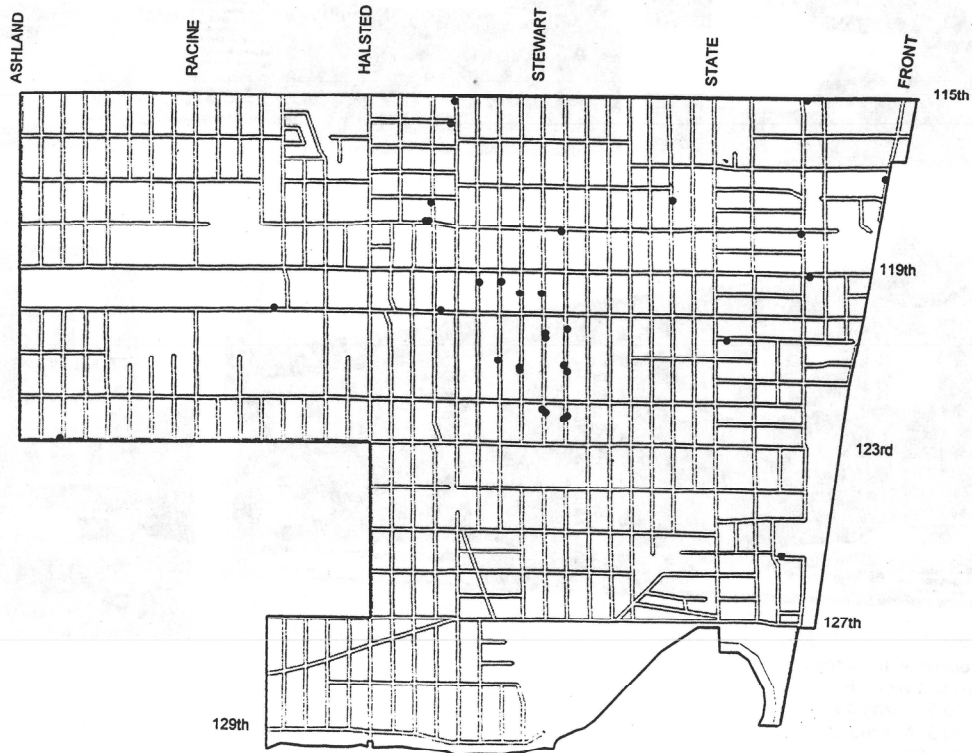
Population: 39,846

Number of Structures: 9,852

Avg. Date of Construction: 1936

Significant Structures: 33

Source: 1990 Census, Harris File, CHRS



(Dots show approximate, rather than specific, locations of significant structures.)
Copyright 1996, City of Chicago, Department of Planning and Development

Community Area # 53

West Pullman

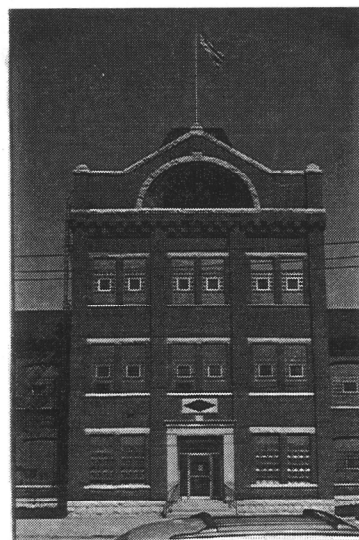
Taking its name from Pullman, the famous planned company town to the northeast, West Pullman originated as the settlement of Kensington near the Calumet station (1852, demolished) shared by the Illinois Central and Michigan Central railroads at 115th Street and Cottage Grove Avenue. Inhabited by a few truck farmers who brought goods into Chicago on the Holland Michigan Avenue Road, the community grew from State Street to the Illinois Central tracks between 115th and 125th streets. In 1881, the Gano Company of Cincinnati platted a subdivision west of State Street between 115th and 119th streets, which incorporated as the town of Gano in 1888. An Italianate-style house at 605 W. 116th Street survives from this period.



605 W. 116th St.

In 1889, the portion of the community area east of State Street, which included Kensington, was annexed to Chicago. Gano was forced by financial difficulties to accept annexation the following year. Most of the community's residents worked in nearby Roseland or Pullman until the 1891 creation of the West Pullman Land Association attracted industries to vacant land south of 119th Street, west of Wentworth Avenue. Soon, the Illinois Central opened a station at 121st Street and Stewart Avenue, and streetcars were extended down Michigan Avenue to 119th Street. The Land Association created a building boom that lasted three years, then was halted by the 1894 depression. An 1890s manufacturing plant at 1000 W. 120th Street, homes south of 120th Street on Stewart and Eggleston avenues, and the West Pullman School (1894) at 11919 S. Parnell Avenue

1000 W. 120th St.



recall this period of prosperity.

In 1895, the industrial area west of Halsted, between 115th and 123rd streets, was annexed to Chicago. Economic recovery brought new construction, including the Thomas Scanlon School (1897) at 11721 S. Perry Avenue

The West Pullman Land Association went bankrupt in 1908, but development continued. Frank Lloyd Wright designed the Stephen A. Foster House at 12147 S. Harvard Avenue in 1900, showing his interest in Japanese architecture during the years when he was developing his Prairie style.

The 1920s saw extensive development, as West Pullman streets filled with brick bungalows and small flat buildings. Commercial streets continued to develop with buildings such as the State Bank of West Pullman (now House of Prayer Temple, Church of God in Christ) at 622 W. 120th Street (1919).

In 1927-28, two additional parcels of industrial land within West Pullman, along the Calumet River, were annexed to Chicago, and the community area grew to its present boundaries. Another housing construction boom took place in the 1960s, following the earlier trend toward single family homes.

The focus of the Chicago Historic Resources Survey was on buildings erected prior to 1940. Buildings and developments erected after that date generally are not included in the inventory.



State Bank of West Pullman
622 W. 120th St.

West Pullman School
11919 S. Parnell Av.



Community Area #53

West Pullman

Address	Date	Architect	Building Style	Survey		Building Code Type	PIN	Form #
				LM	IS			
205 E 115 ST	1908			N	N	OR COMM/RES	2522302002	530919003
605 W 116 ST	1880s		ITALIANATE	N	Y	OR SFR	2521305005	533405003
335 W 118 ST	1893			N	N	OR 2-3 FLAT	2521422035	533404001
640 W 118 ST	1928	SMITH, GEORGE S.	RENAISS REV	N	N	OR REL MISC	2521321017	533405002
656 W 118 ST	1911			N	Y	OR CHURCH	2521321016	532405001
223 E 119 ST	1923	HUGHES, ANDREW		N	N	OR SFR	2527104022	530916002
23 E 120 PL	1909			N	N	OR SFR	2527114009	530916001
622 W 120 ST	1919	HETHERINGTON, JO	CLASSICAL REV	N	Y	OR BANK	2528103023	532401001
1000 W 120 ST	1890s			N	Y	OR MANUFACT	2529200002	533402001
1500 W 123 ST	1925	VON HOLST, HERMA		N	Y	OR UTILITY	2529111002	533403001
140 E 125 ST	1920s		COLONIAL REV	N	Y	OR UTILITY	2528420003	530914010
140 E 125 ST	1920s		COLONIAL REV	N	N	OR UTILITY	2528420003	530914009
11952 S EGGLESTON AV				N	Y	GN	2528106038	533402003
12134 S EGGLESTON AV	1896			N	Y	OR SFR	2528122034	530918003
12144 S EGGLESTON AV	1906		COLONIAL REV	N	Y	OR SFR	2528122029	530918002
11630 S FRONT AV	1915	BEERS, HERBERT P.		N	Y	OR UTILITY	2522312063	530919002
12007 S HARVARD AV	1904			N	N	OR SFR	2528209002	530914008
12126 S HARVARD AV	1908		CRAFTSMAN	N	Y	OR SFR	2528216021	530914007
12147 S HARVARD AV	1900	WRIGHT, FRANK LL		Y	Y	RD SFR	2528217011	530914006
12225 S HARVARD AV	1905		QUEEN ANNE	N	N	OR SFR	2528225007	530914005
12234 S HARVARD AV	1910			N	N	OR SFR	2529218033	530914004
11800 S INDIANA AV	1911	BRIELMEISER, E., &	GOthic REV	N	Y	OR CHURCH	2522319035	530919001
11740 S LOWE AV	1928	SMITH, GEORGE S.	RENAISS REV	N	N	OR CHURCH	2521321017	533405005
11915 S NORMAL AV	1894			N	N	OR 6-FLAT	2528106009	532401002
12112 S NORMAL AV	1895			N	N	OR SFR	2528121020	530918001
11919 S PARNELL AV	1894		CLASSICAL REV	N	Y	OR SCHOOL	2528105009	533401003
11721 S PERRY AV	1897		CLASSICAL REV	N	Y	OR SCHOOL	2521420008	533404002
11952 S STEWART AV				N	Y	GN	2528107036	533402002
12021 S STEWART AV	1896			N	Y	OR SFR	2528208006	530914003
12035 S STEWART AV	1889		COLONIAL REV	N	N	OR SFR	2528208027	530914002
12204 S STEWART AV	1903		COLONIAL REV	N	Y	OR SFR	2528131018	530918004
12215 S STEWART AV	1913		CRAFTSMAN	N	N	OR SFR	2528224004	530914001
11512 S WALLACE ST	1913	SWARDSON, CHARL		N	N	OR SFR	2521302006	533405004



Stephen A. Foster House
12147 S. Harvard

Survey information for this community area was accurate at the time it was first surveyed in September 1983.
For an explanation of column headings, see page III-1.