

**Community Area #52**

## **East Side**

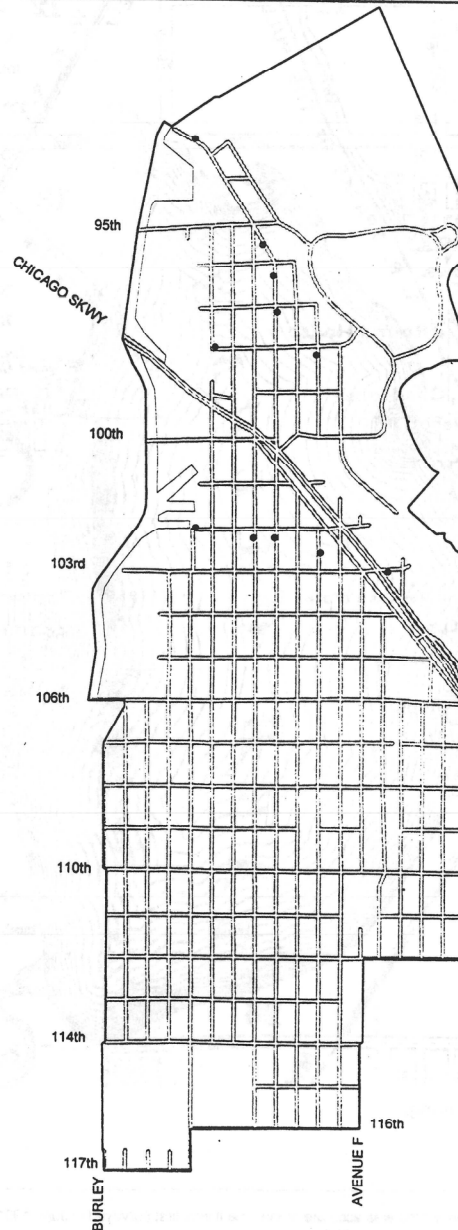
**Population: 20,450**

**Number of Structures: 5,933**

**Avg. Date of Construction: 1933**

**Significant Structures: 10**

*Source: 1990 Census, Harris File, CHRS*



(Dots show approximate, rather than specific, locations of significant structures.)  
Copyright 1996, City of Chicago, Department of Planning and Development

---

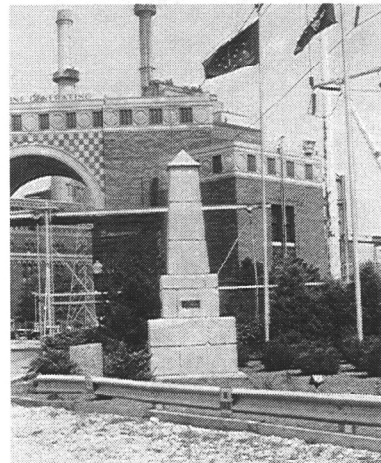
## Community Area # 52

# East Side

East Side, like adjacent communities, developed as a result of the intensive industrial development that took place in the Lake Calumet region in the 19th and early 20th centuries. It is Chicago's easternmost neighborhood, bounded on the west by Lake Calumet and on the east by the Indiana-Illinois state line, and is accessible to the rest of the city by bridges over the Calumet River. It includes the oldest structure in Chicago, a monument marking the state line, built in 1820 at 4001 E. 102nd Street. East Side's earliest function as a transportation connection began in the early 1800s with Lake Michigan ferry service and an 1839 pontoon toll bridge (demolished). Although traversed by the Michigan and Southern railroad (later New York Central) in 1848, development did not really begin until the development of harbor and dock facilities by the Calumet and Chicago Dock and Canal Company after 1870.

In 1873, Charles Colehour and Douglas Taylor developed an iron workers subdivision near Silicon Steel Company land on the Calumet River. That same year a railroad station on the Michigan and Southern line opened at 100th Street and Ewing Avenue, and Colehour built the Ewing House Hotel (demolished) across the street. An Eastlake-style house at 9806 S. Avenue H and an Italianate-style residence at 10261 S. Avenue H are surviving buildings from this first period of development.

Silicon Steel failed, but the land continued to be attractive to industry, and additional steel works, a tin plating facility, a brewery and wood finishing



State Line Monument  
4001 E. 102nd St.

10261 S. Avenue H



---

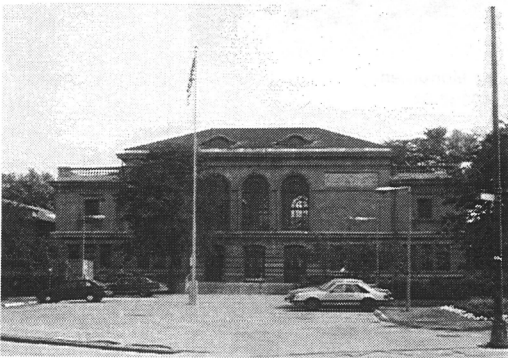
mills were in place by the mid-1880s.

In 1889, East Side became part of the City of Chicago. Iroquois Steel opened a plant at 95th Street and the Calumet River in the 1890s, and the forerunner of Republic Steel opened in 1891 at 118th Street and the river. The area boomed over the next 30 years as more industrial and transportation facilities were completed. An 1890s grain elevator survives at 3939 E. 103rd Street. A Romanesque Revival church, St. George (1909) was built at 9550 S. Ewing. The burgeoning population lived in modest houses and flats. Two interesting apartment buildings from this period are located on Ewing Avenue, at Nos. 9624 and 10210.



3939 E. 103rd St.

Fieldhouse, Calumet Park  
3806 E. 98th St.



By the 1920s the residential community between 95th and 109th Streets, west of Ewing Avenue, was filled with brick bungalows, and Calumet Park, with its 1922 Classical Revival-style field house, was built at 95th Street on lakefront landfill composed of industrial slag.

The Depression hit the community very hard. Little real estate development occurred, and local workers struggled to keep jobs and maintain previous living standards. The infamous Memorial Day Massacre of ten striking CIO union members took place outside of Republic Steel in 1937.

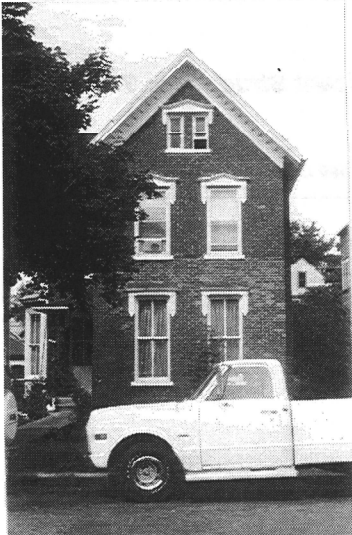
World War II revived demand for steel and other industrial products, and prosperity encouraged a spurt of new residential, commercial and industrial development from 1940 to 1970, filling the area south of 106th Street with modern single family homes and churches.

*The focus of the Chicago Historic Resources Survey was on buildings erected prior to 1940. Buildings and developments erected after that date generally are not included in the inventory.*

# Community Area #52

## East Side

Address	Date	Architect	Building Style	Survey		Building Code Type	PIN	Form #
				LM	IS			
3806 E 98 ST	1922		CLASSICAL REV	N	Y	OR FIELDHSE	2605326002	521070003
4001 E 102 ST	1820			N	N	OR MONUMEN	2608400005	521055002
3939 E 103 ST	1890s			N	N	OR GRAIN EL	2608401013	521055001
9806 S AVENUE H	1870s		EASTLAKE	N	N	OR SFR	2608104025	521063001
10261 S AVENUE H	1870s		ITALIANATE	N	N	OR SFR	2608306016	521056003
10210 S AVENUE L	1890s		QUEEN ANNE	N	N	OR 2-3 FLAT	2608302025	521056002
9550 S EWING AV	1903	BRINKMANN, WILLIA	ROMANESQUE	N	N	OR CHURCH	2528224023	521070004
9624 S EWING AV	1895		QUEEN ANNE	N	Y	OR MFR	2605315030	521070002
9701 S EWING AV	1932	KOCHER, JACQUES	TUDOR REV	N	N	OR GAS STA	2605323001	521070001
10210 S EWING AV	1880s			N	N	OR MFR	2608303045	521056001



(Clockwise, from top left)  
 4806 S. Avenue H  
 10210 S. Ewing Av.  
 10210 S. Avenue L  
 9624 S. Ewing Av.