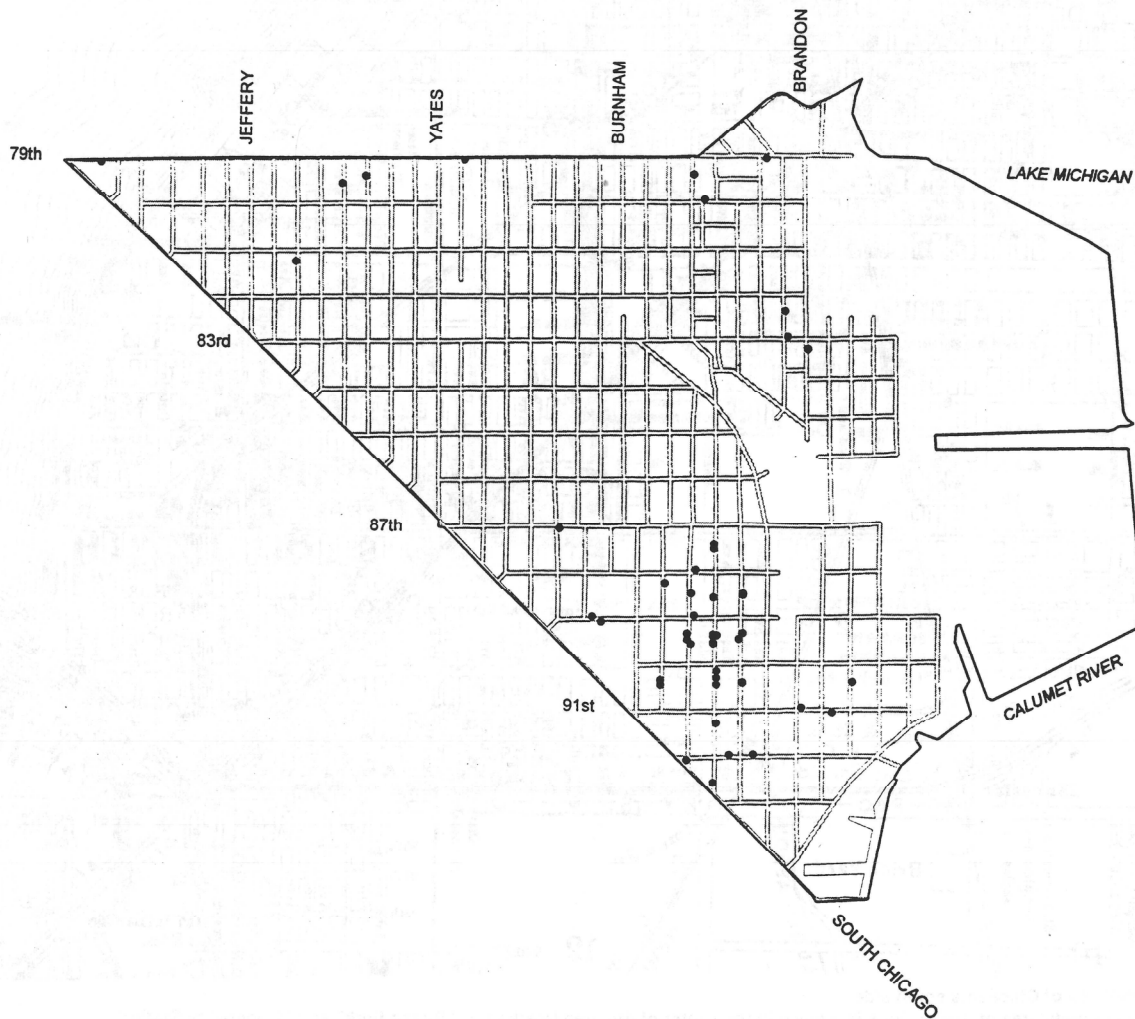


Community Area #46
South Chicago

Population: 40,776
Number of Structures: 7,792
Avg. Date of Construction: 1918

Significant Structures: 50

Source: 1990 Census, Harris File, CHRS



(Dots show approximate, rather than specific, locations of significant structures.)
Copyright 1996, City of Chicago, Department of Planning and Development

Community Area # 46

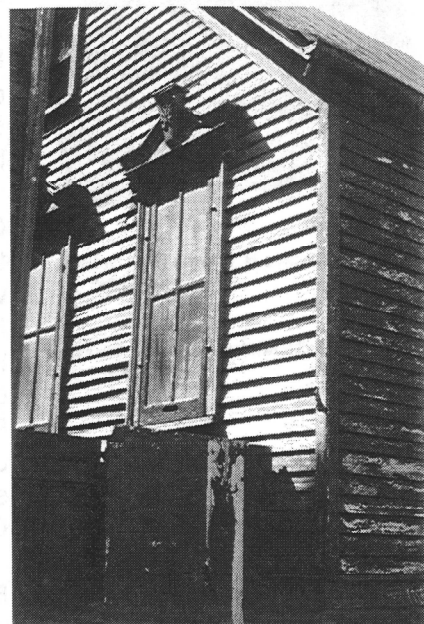
South Chicago

Situated where the Calumet River meets Lake Michigan, the South Chicago area was considered both for the site of Fort Dearborn and for the Illinois & Michigan Canal, which connected Lake Michigan to the DesPlaines and Illinois rivers. An 1833 government survey advocated the Calumet River for the canal's origin, which encouraged Lewis Benton, an early land speculator, to plat the city of "Calumet" and to erect 10 homes and the Eagle Hotel (demolished).

However, the Chicago River was chosen as the origin for the canal, the construction of which began in 1836, and South Chicago remained a remote hunting and fishing community for many years. An early settler, Andreas von Zirngibl, a veteran of the 1814 Battle of Waterloo between French and British armies, was interred here. His burial marker is still present at 9333 S. Ewing.

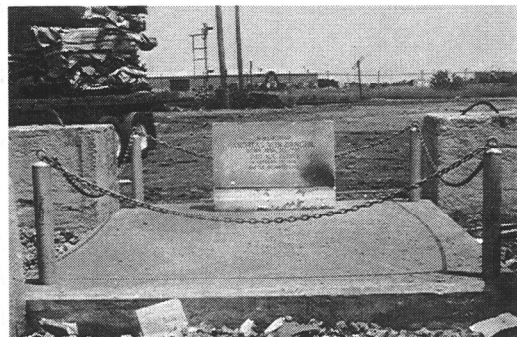
In 1848, South Chicago became a little less isolated when the Lake Shore and Michigan railroad laid tracks between South Chicago and the community of Englewood. In addition, a road was built to Chicago by 1851. A railroad station, originally named "Ainsworth," was built in 1857, and a small community grew up nearby.

In 1869, the Calumet and Chicago Dock and Canal Company began to improve the harbor and shipping facilities in the area, and by 1873, South Chicago had a harbor and docking facilities for lake-plying ships. Steel plants, lumber mills, grain elevators and railroad shops were built soon after. In 1874, the Ainsworth station was renamed South Chicago.



2639 E. 87th St.

Andreas von Zirngibl Monument
9333 S. Ewing Av.



An Italianate-style frame house from the 1870s survives at 2639 E. 87th.

A milestone was reached in 1881, with the opening of the South Works of the North Chicago Rolling Mill Company, a steel plant that would dominate the life of South Chicago for a century, making it one of the world's leading steel producing areas. In 1883, the Illinois Central railroad began regular service to South Chicago. Thereafter, the community built up rapidly with frame cottages, such as those surviving at 8851 S. Houston and 3111 E. 79th.



James H. Bowen High School
2700 E. 89th St.

In 1889, South Chicago was annexed to Chicago. By this time, densely-populated neighborhoods had developed around the South Works plant, located along the lakefront between 79th and the Calumet River. The burgeoning population spurred the construction of commercial and residential buildings throughout the area. By 1900, South Chicago had been extensively developed.

Commercial Avenue lived up to its name, becoming the shopping and banking center for the community with buildings such as the Calumet National Bank at No. 9117 (1909). St. Michael Catholic Church, located at 3134 E. 83rd, was built in 1907 to designs by William Brinkmann. The following year, Prairie School architect Dwight Perkins designed James R. Bowen High School at 2700 E. 89th, very similar to his landmark Carl Schurz High School on Chicago's Northwest side.



St. Michael Catholic Church
3134 E. 83rd St.

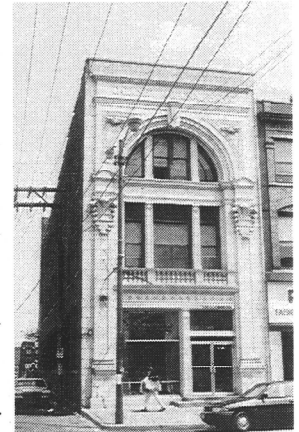
By 1920, South Chicago was an established working-class community of single-family homes and apartments. Commercial Avenue continued to develop in the 1920s with the erection of the Peoples Gas South Chicago Neighborhood Store (1925, von Holst & Elmslie) at no. 8935. That same year, John Eberson designed the Middle-Eastern inspired Avalon Theater (now the New Regal Theater) at 1641 E. 79th in the community's far northwestern corner.

The focus of the Chicago Historic Resources Survey was on buildings erected prior to 1940. Buildings and developments erected after that date generally are not included in the inventory.

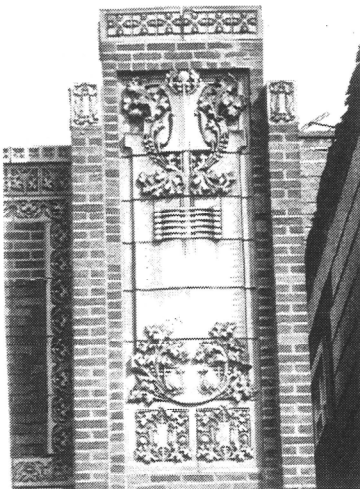
Community Area #46

South Chicago

Address	Date	Architect	Building Style	Survey LM	IS	Building Code Type	PIN	Form #
	1893			N	N	OR		460716001
	1911			N	N	OR		460716002
1641 E 79 ST	1925	EBERSON, JOHN	MIDDLE EAST	Y	Y	OR	2036100003	460817001
2431 E 79 ST	1929	RANDL, NORMAN		N	N	OR	2131101001	460715001
3111 E 79 ST	1880s		QUEEN ANNE	N	Y	OR	2131206004	460714002
2950 E 80 ST	1925			N	Y	OR	2131203025	460714001
3134 E 83 ST	1907	BRINKMANN, WILLIA	GOthic REV	N	Y	OR	1936300027	460714004
2639 E 87 ST	1870s			N	N	OR	2606105001	460706003
2944 E 88 ST	1900s			N	Y	OR	2606202015	460705002
2700 E 89 ST	1908	PERKINS, DWIGHT H	CRAFTSMAN	N	Y	OR	2606114001	460706001
2733 E 89 ST	1900s	BURNHAM, D.H., & C		N	Y	OR	2606120001	460706002
2938 E 89 ST	1890s			N	Y	OR	2606209021	460705008
3202 E 91 ST	1929	BURNS, JAMES	CLASSICAL REV	N	Y	OR	2606227033	461087001
3251 E 91 ST	1893		QUEEN ANNE	N	N	OR	2605112005	461080001
2931 E 92 ST	1902			N	Y	OR	2606400029	461081005
3020 E 92 ST	1890s		QUEEN ANNE	N	Y	OR	2606403031	461081002
3066 E 92 ST	1890s		ROMANESQUE	N	Y	OR	2606404031	461081001
8311 S BRANDON AV	1901			N	N	OR	2132200005	460709001
9037 S BUFFALO AV	1893			N	Y	OR	2605109014	461086001
8112 S CLYDE AV	1900s			N	N	OR	2036217041	460816003
8738 S COMMERCIAL AV				N	Y	GN	2606202031	460705011
8750 S COMMERCIAL AV	1898	CARR, MARTIN	CLASSICAL REV	N	Y	OR	2606202015	460705001
8856 S COMMERCIAL AV				N	Y	GN	2606209039	460705012
8930 S COMMERCIAL AV				N	Y	GN	2606216031	460705013
8934 S COMMERCIAL AV				N	Y	GN	2606216032	460705014
8935 S COMMERCIAL AV	1925	VON HOLST & ELMS	PRAIRIE	Y	Y	RD	2606217012	460705010
8952 S COMMERCIAL AV	1905	ROY, FRANZ		N	Y	OR	2606216038	460705009
8956 S COMMERCIAL AV				N	Y	GN	2606216039	460705015
9001 S COMMERCIAL AV				N	Y	GN	2606224001	460705016
9021 S COMMERCIAL AV				N	Y	GN	2606224007	460705017
9041 S COMMERCIAL AV				N	Y	GN	2606224015	460705018
9117 S COMMERCIAL AV	1909		CHGO SCHOOL	N	Y	OR	2606403010	461081003
9232 S COMMERCIAL AV	1895		EASTLAKE	N	Y	OR	2606409013	461081004
8811 S ESCANABA AV				N	Y	GN	2606208005	460705019
9026 S ESCANABA AV	1896			N	Y	OR	2606221023	460705007
9040 S ESCANABA AV				N	Y	GN	2606221029	460705020
9333 S EWING AV	<1870			N	N	OR	2605301007	461079001
7935 S EXCHANGE AV				N	Y	GN	2131203024	460714005
8845 S EXCHANGE AV				N	Y	GN	2606209019	460705021
8926 S EXCHANGE AV	1907	DE MONEY, FRANK		N	N	OR	2606215030	460705006
8944 S EXCHANGE AV				N	Y	GN	2606215037	460705022
8957 S EXCHANGE AV				N	Y	GN	2606216022	460705023
8847 S HOUSTON AV				N	Y	GN	2606211019	460705025
8851 S HOUSTON AV	1880s		WORKMAN COT	N	Y	OR	2606211021	460705003
8927 S HOUSTON AV	1902	NEWHOUSE, HENRY	ROMANESQUE	N	Y	OR	2606218046	460705004
8944 S HOUSTON AV				N	Y	GN	2606217036	460705024
9037 S HOUSTON AV	1907	WORTHMANN & STE	GOthic REV	N	N	OR	2606225010	460705005
7936 S LUELLA AV	1915	HECHT, ALBERT S.		N	Y	OR	2036204027	460816002
7958 S PAXTON AV	1925	HOCKE, JOHN		N	Y	OR	2036203029	460816001
8231 S SOUTH SHORE DR	1890s			N	N	OR	2131233008	460714003



Calumet National Bank
9117 S. Calumet Av.



Peoples Gas - South Chicago
Neighborhood Store
8935 S. Commercial Av.



Congregation Agudath Achim-Bikur
8927 S. Houston Av.