

**Community Area #37**

## **Fuller Park**

**Population: 4,364**

**Number of Structures: 877**

**Avg. Date of Construction: 1905**

**Significant Structures: 17**

*Source: 1990 Census, Harris File, CHRS*

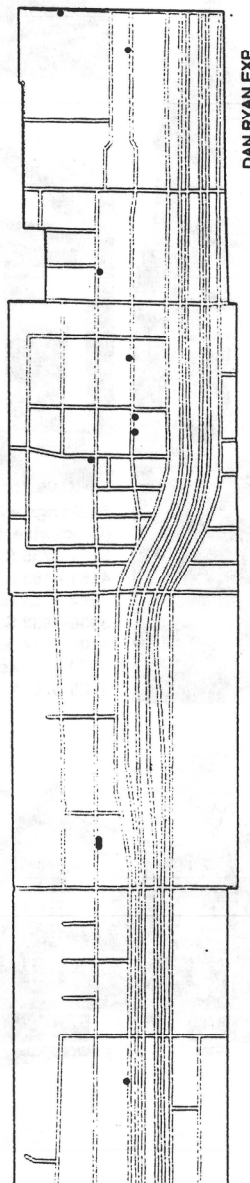
PERSHING

ROOT

47th

51st

GARFIELD



(Dots show approximate, rather than specific, locations of significant structures.)  
Copyright 1996, City of Chicago, Department of Planning and Development

---

## Community Area #37

# Fuller Park

Like Armour Square to the north, Fuller Park is a narrow corridor of a community wedged between the Rock Island railroad and Dan Ryan expressway on the east and the Chicago and Western Indiana railroad on the west. Also like its northern neighbor, the community's name comes from a small park, Fuller Park, developed in the early years of the 20th century.

Fuller Park was originally part of the Town of Lake, incorporated in 1865, and its first growth was spurred by the needs of the railroads that still define the community. The Chicago, Rock Island and Pacific railroad built a car and locomotive works here in 1868, followed in 1871 by shops and roundhouses for the Lake Shore and Michigan Southern railroad. The ability to construct inexpensive frame houses outside of Chicago's fire code area led to early residential growth in the 1870s, evidenced by surviving houses at 4463 S. Wells and 4233 S. Princeton.

Railroads continued to be important builders in Fuller Park, as both the Wabash and Pittsburgh and Fort Wayne railroads built shops here in the 1870s and 80s. Chicago architect Henry Newhouse designed a series of modest, but elegant Queen Anne-style homes in the mid-1880s at 5029-45 S. Princeton Avenue. As part of the Town of Lake, the community area was annexed to Chicago in 1889.

Fuller Park itself, designed by the Olmsted Brothers in 1905, was built to serve the working population of the community. Its Classical Revival-style fieldhouse at 301 W. 45th Street was completed in



4463 S. Wells St.

4233 S. Princeton Av.



---

1910 by D.H. Burnham & Co.

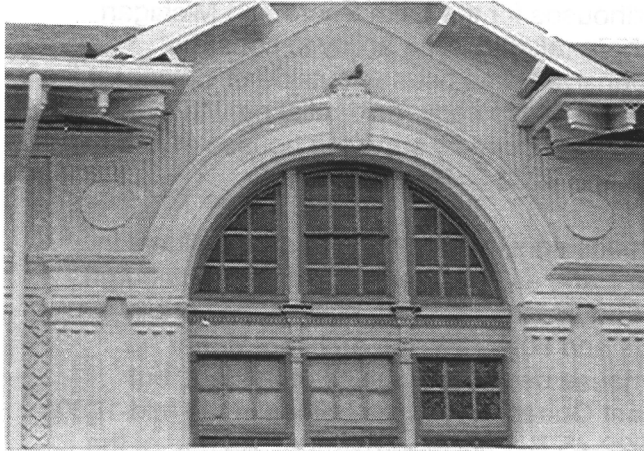
The community became even more industrialized in the early 20th century, and a deteriorated housing stock led to general decline by the 1950s, when many blocks were demolished for construction of the Dan Ryan expressway. New construction in the community since the 1950s has been negligible, although renewal efforts centering on Fuller Park itself and its landmark fieldhouse continue today.

*The focus of the Chicago Historic Resources Survey was on buildings erected prior to 1940. Buildings and developments erected after that date generally are not included in the inventory.*

5029-5045 S. Princeton Av.



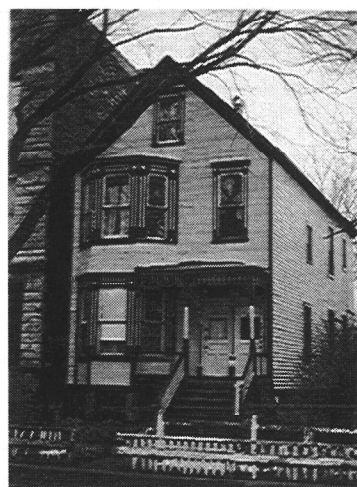
Fieldhouse, Fuller Park  
301 W. 45th St.



# Community Area #37

## Fuller Park

Address	Date	Architect	Building Style	Survey LM IS	Building Code Type	PIN	Form #
301 W 45 ST	1910s		CLASSICAL REV	N Y OR	FIELDHSE	2004423001	371104001
359 W PERSHING RD				N Y GN		2004105005	371110004
4233 S PRINCETON AV	<1870			N N OR	SFR	2004222026	371109001
5029 S PRINCETON AV	1880s	NEWHOUSE, HENRY		N Y OR	SFR	2009219012	370312001
5031 S PRINCETON AV	1880s	NEWHOUSE, HENRY		N Y OR	SFR	2009219013	370312001
5033 S PRINCETON AV	1880s	NEWHOUSE, HENRY		N Y OR	SFR	2009219014	370312001
5035 S PRINCETON AV	1880s	NEWHOUSE, HENRY		N Y OR	SFR	2009219015	370312001
5037 S PRINCETON AV	1880s	NEWHOUSE, HENRY		N Y OR	SFR	2009219016	370312001
5039 S PRINCETON AV	1880s	NEWHOUSE, HENRY		N Y OR	SFR	2009219017	370312001
5041 S PRINCETON AV	1880s	NEWHOUSE, HENRY		N Y OR	SFR	2009219018	370312001
5043 S PRINCETON AV	1880s	NEWHOUSE, HENRY		N Y OR	SFR	2009219019	370312001
5045 S PRINCETON AV	1880s	NEWHOUSE, HENRY		N Y OR	SFR	2009219020	370312001
3930 S WELLS ST	1896			N N OR	2-3 FLAT	2004201012	371109002
4350 S WELLS ST	1899			N N OR	2-3 FLAT	2004408029	371104003
4433 S WELLS ST	1880s			N N OR	2-3 FLAT	2004417002	371104004
4463 S WELLS ST	1870s		WORKMAN COT	N N OR	SFR	2004417014	371104002
5340 S WELLS ST	<1870			N N OR	2-3 FLAT	2009417051	370307002



(Clockwise, from bottom left)  
 4433 S. Wells St.  
 5340 S. Wells St.  
 3930 S. Wells St.  
 4350 S. Wells St.